

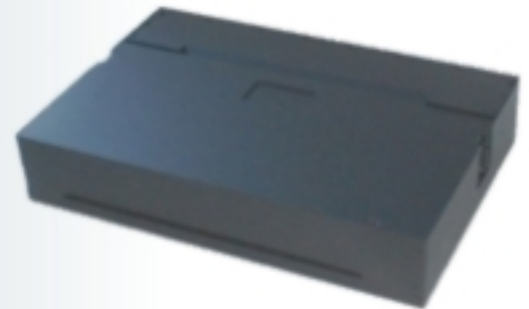
# TEMPEST Mobile Printer



## Model I80T

### Standard Features

- NSTISSAM TEMPEST/1-92 LEVEL 1 Compliant
- 14ppm Black/10ppm Color Print Speed
- 600 x 600 dpi Black Resolution
- 4800 x 1200 dpi Color Resolution
- Built-in 30 sheet feeder
- 1,088 Nozzles (320 Black, 256 x 3 color)
- 64KB of Buffer Ram
- USB 2.0 Interface
- Windows XP/2000 compatibility
- 110VAC Operation



The Eclipse TEMPEST I80t offers the latest printing technology in a light weight, compact TEMPEST design. Its small size and outstanding resolution make it ideal for the most demanding mobile applications. Media types include plain paper, envelopes, transparency film, high resolution paper and glossy photo paper. Media can be manually fed or automatically fed using

the integrated 30 sheet auto-feeder. The optional battery allows continuous printing during a loss of power guaranteeing full independence in a mobile environment. All Eclipse TEMPEST products are designed by National Security Agency Certified Engineers and come with a lifetime TEMPEST warranty.

## 180T Specifications

### **Number of Nozzles**

Total - 1,088

Black - 320

Color - 256 x 3 (C,M,Y)

### **Print Speed**

Black: 14 ppm

Color: 10 ppm

### **Print Resolution**

600 x 600 dpi Black

4800 x 1200 dpi Color

### **Buffer Ram**

64KB

### **External Interfaces**

USB 2.0

Fiber Optic Network Interface  
(Optional)

### **Operating System Support**

Microsoft Windows NT 4.0

Microsoft Windows 2000

Microsoft Windows XP

### **Paper Handling**

Built-in sheet feeder

30 sheets @ paper weight 17 lb

### **Size**

Width: 13.25 inches

Depth: 9 inches

Height: 2.5 inches

### **Weight**

8.5lbs

### **Electrical (AC Adapter)**

120 Vac, 60 Hz